

***2022/2023 Redistricting Plan
Proposed Celebration High and
Osceola High Schools
Attendance Zone Boundaries***

***Guidelines for
Establishing
Redistricting Committee
and
Calendar for
Establishing
Attendance Zones***

THE SCHOOL BOARD OF OSCEOLA COUNTY, FLORIDA

Guidelines for Establishing Redistricting Committees

SCHOOL COMMITTEES

A redistricting committee representing each school involved in the redistricting process shall be established by the School Advisory Council at each affected school.

Each school committee shall be broadly representative of the school community.

Each school committee shall be composed of five members, one of which shall be an administrator at the school. No more than one of the four remaining members of the committee shall be an employee of the School District of Osceola County.

DISTRICTWIDE COMMITTEE

There shall be a Districtwide Committee established. The structure of the committee shall be as follows:

1. Superintendent;
2. Deputy Superintendent of Human Services, or designee;
3. Assistant Superintendents for Elementary, Middle, and High School Curriculum & Instruction, or designees;
4. Assistant Superintendent for School Operations, or designee;
5. Chief Financial Officer for Business & Finance, or designee;
6. Chief Facilities Officer, or designee;
7. Director of Transportation, or designee; and
8. Designated Principals impacted by the redistricting process and their 5-member committees.

**THE SCHOOL BOARD
OF
OSCEOLA COUNTY, FLORIDA**

**Calendar for Establishing Attendance Zones
for Celebration High and Osceola High Schools
for the 2023/2024 School Year**

- | | |
|----------------------------------|---|
| 01/2023 – 02/2023 | Staff, Principals, and School Advisory Committees meet to discuss attendance zones for Celebration High and Osceola High schools. |
| 01/17/2023 | School Board meets to set calendar, to adopt guidelines, and to determine if any additional schools will be considered for redistricting this year. |
| 01/30/2023 02/13/2023 | Districtwide Redistricting Committee meets to review data, determine additional needs, and to prepare preliminary plans. Meetings to be held at 6:00 P.M. at the Transportation Department, International Room, 401 Simpson Road, Kissimmee, FL. |
| 01/20/2023 01/29/2023 | Public Hearing Notice to Advertise |
| 02/21/2023 | Public Hearing to adopt high school attendance zone boundaries for the 2023/2024 school year to be held at 6:00 P.M. at the Administrative Complex, 817 Bill Beck Boulevard, Kissimmee, FL. |
| Note: | Additional meetings may be scheduled if necessary or scheduled meetings may be cancelled if they are not required. Dates are subject to change if additional meetings are scheduled or if scheduled meetings are cancelled. |

All proposed attendance zone boundaries can be viewed at each respective school or by visiting, www.osceolaschools.net and then following the steps provided: (1) Departments, (2) Planning Services, (3) Redistricting & School Zoning Information, (4) Redistricting, (5) Celebration High and Osceola High School Redistricting

Public Hearing Notice
for
Celebration High and Osceola High
Schools

**Proposals for Attendance Zones
for Elementary and High Schools
for the 2023/2024 School Year
Osceola District Schools**

In an attempt to balance school populations, seven existing schools serving the Kissimmee, and St. Cloud areas could be affected by redistricting changes.

Representatives (parents and staff) of the existing seven schools, along with district staff were involved in the preparation of the accompanying information.

The School Board of Osceola County will hold a Public Hearing and adopt a plan for attendance zones for the 2023/2024 School Year for the following schools:

Grades K-5: Hickory Tree Elementary and Narcoossee Elementary

**Grades 9-12: Celebration High, Harmony High, Osceola High,
St. Cloud High, and Tohopekaliga High**

The Public Hearing is as follows:

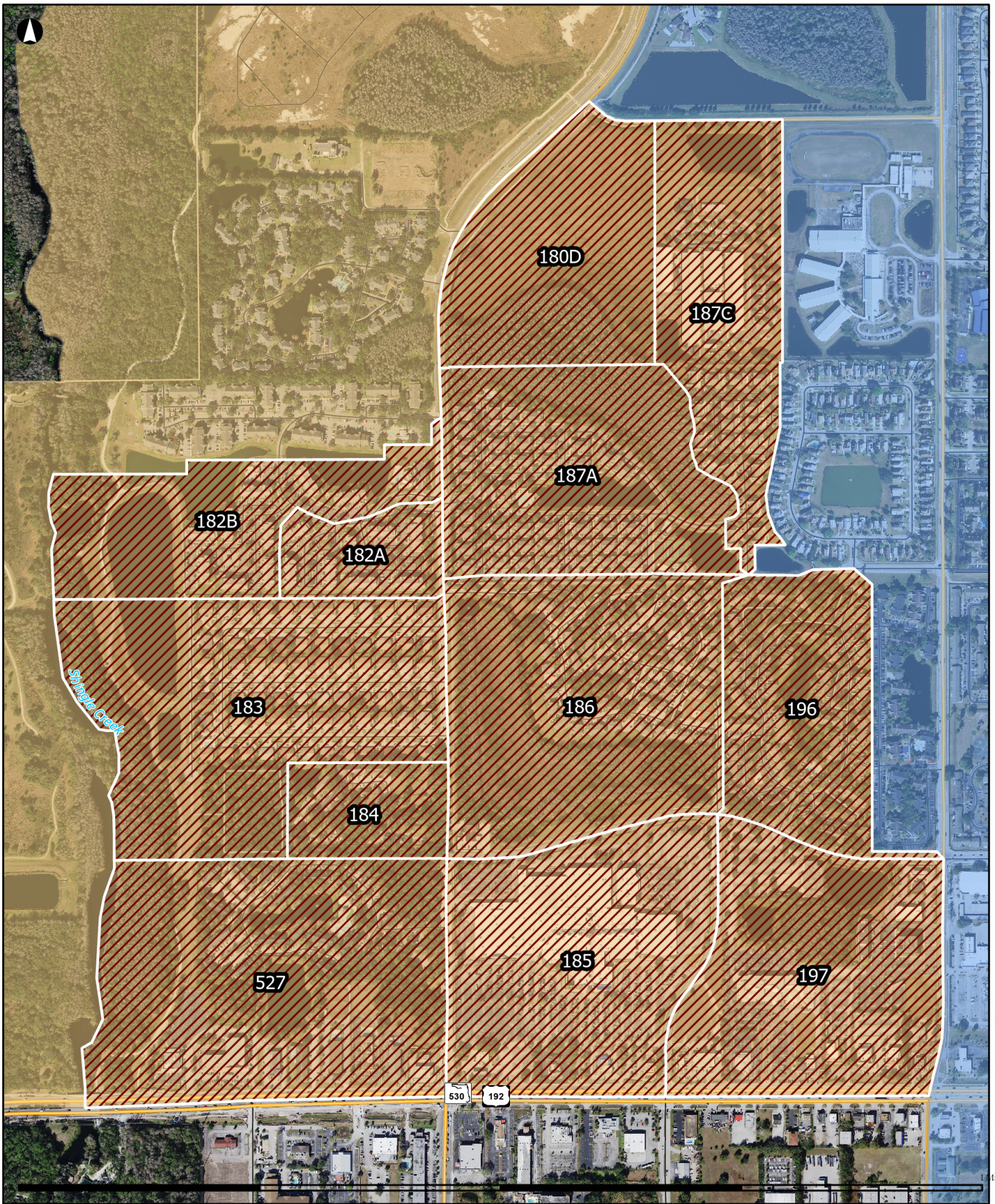
**Public Hearing 6:00 P.M.
February 21, 2023
Central Administrative Center
Board Room
817 Bill Beck Boulevard
Kissimmee, Florida 34741**

All proposed attendance zone boundaries can be viewed at each respective school or by visiting, www.osceolaschools.net and then following the steps provided: (1) Departments, (2) Planning Services, (3) Redistricting & School Zoning Information, (4) Redistricting, and (5) Hickory Tree Elementary, Narcoossee Elementary, Celebration High, Harmony High, Osceola High, St. Cloud High School, and Tohopekaliga High, Redistricting.

Osceola Star: 01/20/2023

Orlando Sentinel: 01/29/2023

***2023/2024 Proposed Changes to
Celebration High and Osceola High
Schools Attendance Zone Boundaries***



**Proposed Redistricting Area
CLHS to OCHS area zoom**

Draft redistricting proposed for SY2324



Planning Services Department
The School District of Osceola County, FL

- Celebration High
- Osceola High

Disclaimer: All data, information, and maps are provided "as is" without any warranty or representation of accuracy, timeliness, or completeness. The School District of Osceola County, Florida (the "School District") cannot accept any responsibility for errors, omissions, or positional accuracy. The School District specifically disclaims any warranty, either express or implied, including, without limitation, the implied warranties of merchantability and fitness for a particular purpose. The burden of determining accuracy, timeliness, merchantability, and fitness for a particular use rests solely on the requestor, and the requestor assumes all risk as to quality and performance. In no event will the School District or its staff be liable for any direct, indirect, incidental, special, consequential, or other damages, including, without limitation, loss of profit, arising out of the use of the data, information, and maps even if the School District has been advised of the possibility of such damages. The requestor acknowledges and accepts the limitations of the data, information, and maps, including, without limitation, the fact that the data, information, and maps are dynamic and are in a constant state of maintenance, correction, and update.

Student Demographics

| Proposed School by Study Area | | |
|--------------------------------------|----------------------------|-----------------------------|
| Study Area | Current HIGH School | Proposed HIGH School |
| 180D | <i>Celebration High</i> | <i>Osceola High</i> |
| 187C | <i>Celebration High</i> | <i>Osceola High</i> |
| 187A | <i>Celebration High</i> | <i>Osceola High</i> |
| 186 | <i>Celebration High</i> | <i>Osceola High</i> |
| 196 | <i>Celebration High</i> | <i>Osceola High</i> |
| 185 | <i>Celebration High</i> | <i>Osceola High</i> |
| 197 | <i>Celebration High</i> | <i>Osceola High</i> |
| 527 | <i>Celebration High</i> | <i>Osceola High</i> |
| 184 | <i>Celebration High</i> | <i>Osceola High</i> |
| 183 | <i>Celebration High</i> | <i>Osceola High</i> |
| 182A | <i>Celebration High</i> | <i>Osceola High</i> |
| 182B | <i>Celebration High</i> | <i>Osceola High</i> |

| Student Counts by Study Area (Oct FTE 2022/23 Students) | | | | | |
|--|-------------|-------------|-------------|-------------|--------------|
| Study Area | 9th* | 10th | 11th | 12th | Total |
| 180D | 0 | 0 | 0 | 0 | 0 |
| 187C | 4 | 6 | 8 | 5 | 23 |
| 187A | 14 | 12 | 18 | 12 | 56 |
| 186 | 9 | 11 | 11 | 13 | 44 |
| 196 | 10 | 9 | 11 | 6 | 36 |
| 185 | 0 | 0 | 0 | 0 | 0 |
| 197 | 0 | 0 | 0 | 0 | 0 |
| 527 | 7 | 7 | 4 | 9 | 27 |
| 184 | 3 | 3 | 2 | 0 | 8 |
| 183 | 9 | 6 | 9 | 13 | 37 |
| 182A | 1 | 9 | 12 | 6 | 28 |
| 182B | 5 | 9 | 8 | 7 | 29 |
| Total | 62 | 72 | 83 | 71 | 288 |

**Based on Current 2022/2023 8th grade enrollment.
All counts from the October 14, 2022, Student Geocode*

| Student School of Attendance by Study Area – Current High School | | | | | | | | | | |
|---|-------------|-------------|------------|------------|------------|------------|------------|-------------|-------------|--------------|
| <i>Enrolled School</i> | <i>187C</i> | <i>187A</i> | <i>186</i> | <i>196</i> | <i>527</i> | <i>184</i> | <i>183</i> | <i>182A</i> | <i>182B</i> | <i>Total</i> |
| <i>Incomplete Enrollment</i> | - | 1 | - | - | - | - | - | - | 1 | 2 |
| <i>Celebration High School</i> | 17 | 35 | 29 | 23 | 16 | 5 | 23 | 23 | 20 | 191 |
| <i>Family Empowerment Scholarship</i> | 2 | 2 | 1 | 1 | 1 | - | 3 | - | - | 10 |
| <i>Home School</i> | - | 1 | - | - | - | - | - | - | - | 1 |
| <i>NeoCity Academy</i> | - | 2 | 2 | - | - | - | - | - | - | 4 |
| <i>New Beginnings</i> | - | - | - | - | 1 | - | - | - | - | 1 |
| <i>Osceola County School for the Arts</i> | - | 1 | - | - | - | - | - | 1 | 1 | 3 |
| <i>Osceola High School</i> | - | - | - | - | 1 | - | 2 | 3 | - | 6 |
| <i>Poinciana High School</i> | - | - | - | - | 1 | - | - | - | - | 1 |
| <i>Professional and Technical High School</i> | - | - | 1 | - | - | - | - | - | 1 | 2 |
| <i>Victory Charter School</i> | - | - | 2 | 2 | - | - | - | - | 1 | 5 |
| Total | 19 | 42 | 35 | 26 | 20 | 5 | 28 | 27 | 24 | 226 |

| Student School of Attendance by Study Area – Rising High School | | | | | | | | | | |
|--|-------------|-------------|------------|------------|------------|------------|------------|-------------|-------------|--------------|
| <i>Enrolled School</i> | <i>187C</i> | <i>187A</i> | <i>186</i> | <i>196</i> | <i>527</i> | <i>184</i> | <i>183</i> | <i>182A</i> | <i>182B</i> | <i>Total</i> |
| <i>BridgePrep Academy of Osceola</i> | - | - | - | - | - | - | - | - | 1 | 1 |
| <i>Family Empowerment Scholarship</i> | - | 2 | 2 | - | - | - | - | - | - | 4 |
| <i>Horizon Middle School</i> | - | - | 1 | - | - | - | - | - | - | 1 |
| <i>Kissimmee Charter K-8</i> | - | 1 | - | - | - | - | 1 | - | - | 2 |
| <i>Kissimmee Middle</i> | 2 | 5 | 2 | 5 | 3 | 2 | 6 | 1 | 2 | 28 |
| <i>Mater Brighton Lakes Charter School</i> | - | - | 1 | - | - | - | - | - | - | 1 |
| <i>New Beginnings</i> | - | - | - | - | 1 | - | - | - | - | 1 |
| <i>Osceola County School for the Arts</i> | - | - | - | 1 | - | - | - | - | - | 1 |
| <i>Osceola Virtual Secondary School</i> | - | - | 1 | - | - | - | - | - | - | 1 |
| <i>Parkway Middle School</i> | - | - | - | - | - | - | - | - | 1 | 1 |
| <i>Renaissance Charter at Tapestry</i> | 2 | 5 | 2 | 3 | 2 | 1 | 2 | - | 1 | 18 |
| <i>Victory Charter School</i> | - | - | - | 1 | 1 | - | - | - | - | 2 |
| <i>Zenith Academy</i> | - | 1 | - | - | - | - | - | - | - | 1 |
| Total | 4 | 14 | 9 | 10 | 7 | 3 | 9 | 1 | 5 | 62 |

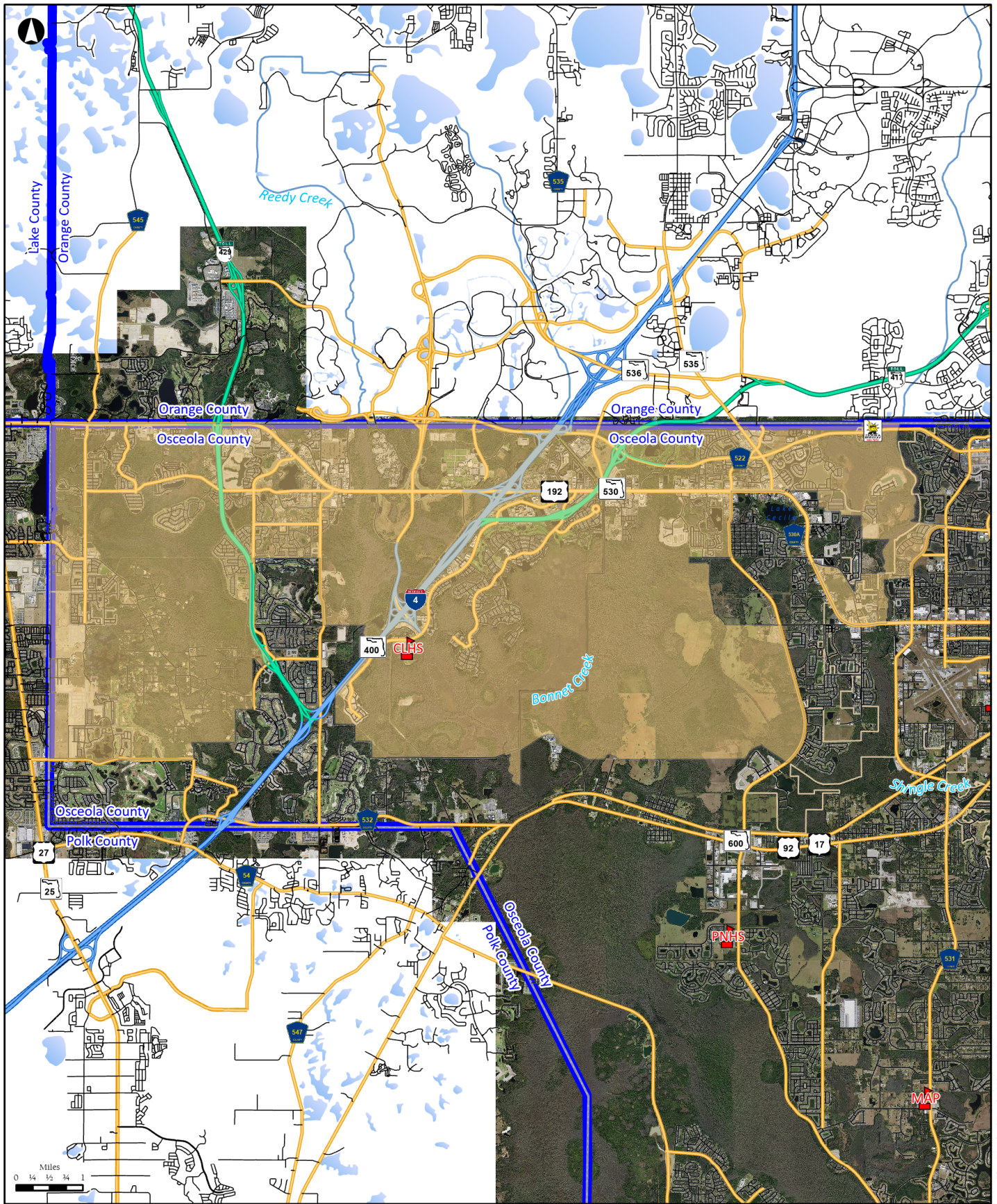
Projected Enrollment

| CLHS to OCHS | School | Plan Area | Year | Grades 9-12 | CHOICE Sending | CHOICE Receiving | NET TOTAL 9-12 | Functional Capacity | Functional Utilization | Functional Capacity W/ Relocatable | Functional Utilization W/ Relocatable |
|---|--------|-----------|-----------|-------------|----------------|------------------|----------------|---------------------|------------------------|------------------------------------|---------------------------------------|
| SB Member: 1 <i>265 Students Projected to move in Study Areas</i> | CLHS | 1a | 2023/2024 | 2,803 | 280 | 290 | 2,813 | 2,677 | 105% | 2,677 | 105% |
| | CLHS | 1a | 2023/2024 | 2,537 | 280 | 290 | 2,547 | 2,677 | 95% | 2,677 | 95% |
| | CLHS | 1a | 2024/2025 | 2,724 | 296 | 290 | 2,718 | 2,677 | 102% | 2,677 | 102% |
| | CLHS | 1a | 2025/2026 | 2,884 | 312 | 290 | 2,862 | 2,677 | 107% | 2,677 | 107% |
| | CLHS | 1a | 2026/2027 | 2,859 | 312 | 290 | 2,837 | 2,677 | 106% | 2,677 | 106% |
| CLHS to OCHS | School | Plan Area | Year | Grades 9-12 | CHOICE Sending | CHOICE Receiving | NET TOTAL 9-12 | Functional Capacity | Functional Utilization | Functional Capacity W/ Relocatable | Functional Utilization W/ Relocatable |
| SB Member: 1 | OCHS | 3 | 2023/2024 | 3,034 | 934 | 344 | 2,444 | 2,478 | 99% | 2,811 | 87% |
| | OCHS | 3 | 2023/2024 | 3,298 | 934 | 344 | 2,708 | 2,478 | 109% | 2,811 | 96% |
| | OCHS | 3 | 2024/2025 | 3,329 | 981 | 344 | 2,692 | 2,478 | 109% | 2,811 | 96% |
| | OCHS | 3 | 2025/2026 | 3,342 | 1,068 | 344 | 2,618 | 2,478 | 106% | 2,811 | 93% |
| | OCHS | 3 | 2026/2027 | 3,298 | 1,068 | 344 | 2,574 | 2,478 | 104% | 2,811 | 92% |

Notes:

- Choice in and out based on current calculations
- Assumes all students in redistricting area go to the new school
- Does not account for future redistricting

***2023/2024 Proposed
Celebration High and Osceola High
Schools
Attendance Zone Boundaries***


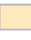



**Proposed Attendance Boundary
Celebration High School
SY2023/24**

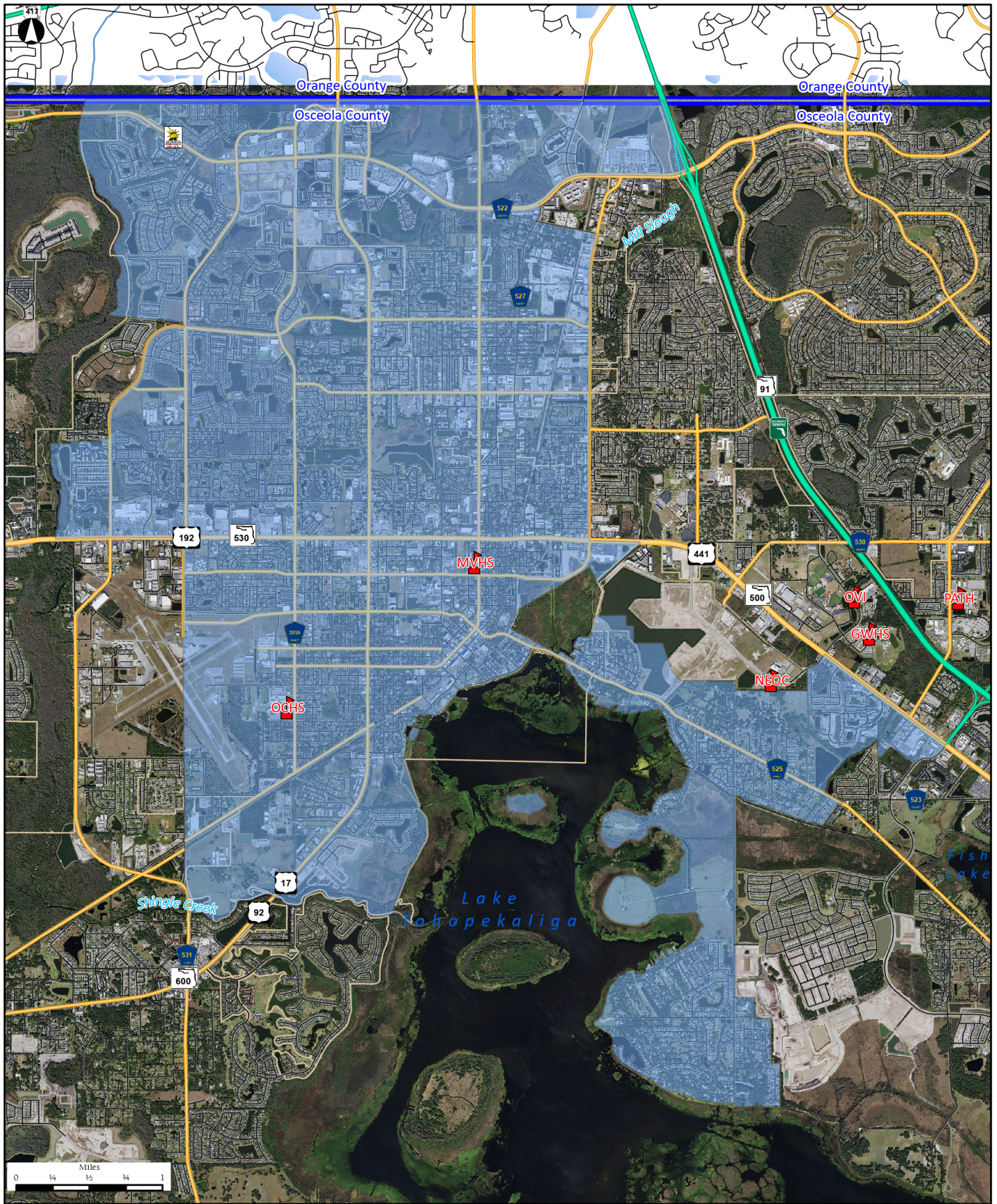
Draft restricting proposed for SY23/24



Planning Services Department
The School District of Osceola County, FL

-  **Schools**
-  **Celebration High**
-  **Osceola High**

Disclaimer: All data, information, and maps are provided "as is" without any warranty or representation of accuracy, timeliness, or completeness. The School District of Osceola County, Florida (the "School District") cannot accept any responsibility for errors, omissions, or positional accuracy. The School District specifically disclaims any warranty, either express or implied, including, without limitation, the implied warranties of merchantability and fitness for a particular purpose. The burden of determining accuracy, timeliness, merchantability, and fitness for a particular use rests solely on the requestor, and the requestor assumes all risk as to quality and performance. In no event will the School District or its staff be liable for any direct, indirect, incidental, special, consequential, or other damages, including, without limitation, loss of profit, arising out of the use of the data, information, and maps even if the School District has been advised of the possibility of such damages. The requestor acknowledges and accepts the limitations of the data, information, and maps, including, without limitation, the fact that the data, information, and maps are dynamic and are in a constant state of maintenance, correction, and update.


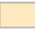



**Proposed Attendance Boundary
Osceola High School
SY2023/24**

Draft restricting proposed for SY23/24



Planning Services Department
The School District of Osceola County, FL

-  **Schools**
-  **Celebration High**
-  **Osceola High**

Disclaimer: All data, information, and maps are provided "as is" without any warranty or representation of accuracy, timeliness, or completeness. The School District of Osceola County, Florida (the "School District") cannot accept any responsibility for errors, omissions, or positional accuracy. The School District specifically disclaims any warranty, either express or implied, including, without limitation, the implied warranties of merchantability and fitness for a particular purpose. The burden of determining accuracy, timeliness, merchantability, and fitness for a particular use rests solely on the requestor, and the requestor assumes all risk as to quality and performance. In no event will the School District or its staff be liable for any direct, indirect, incidental, special, consequential, or other damages, including, without limitation, loss of profit, arising out of the use of the data, information, and maps even if the School District has been advised of the possibility of such damages. The requestor acknowledges and accepts the limitations of the data, information, and maps, including, without limitation, the fact that the data, information, and maps are dynamic and are in a constant state of maintenance, correction, and update.

***Proposed Streets to Transfer
from Celebration High School***

| |
|--|
| <i>Streets to Transfer from Celebration High to Osceola High</i> |
|--|

| | |
|---------------------|---------------------|
| ANTIGUA PL | N HOAGLAND BLVD |
| ARMSTRONG BLVD | JAMAICA RUN LN |
| BAY CLUB CIR | KEY WEST CT |
| BERMUDA WAY LN | NAUTICAL WAY |
| BONAIRE BLVD | OAK CANOPY CT |
| BOWLINE CIR | SAN CRISTOBOLO DR |
| BREAKWATER WAY | SAN GALLO DR |
| W CARROLL ST | SAN SEBASTIAN DR |
| CAYMAN CT | SAN VITAL DR |
| CLUB CT | SAN VITTORINO CIR |
| W COLUMBIA AVE | SAN ZANOBI DR |
| CORSAIR AVE | SANTA MARIA DR |
| COZUMEL CIR | SOUTHERN OAKS CT |
| CROWS NEST DR | SPITFIRE AVE |
| ENCHANTED OAKS CIR | ST KITTS CT |
| FLYING FORTRESS AVE | TROPICAL ISLE BLVD |
| FOXHALL CIR | VENETIAN BAY DR |
| GALLEY CT | W VINE ST |
| GRAND CAYMAN CT | WAR BIRD BLVD |
| HIDDEN COVE PL | WESLEY CREEKSIDE DR |
| HIDEAWAY BAY BLVD | |